



STARBORN®

GUIDE TO DECK AND TRIM FASTENING

**CLIP&RIP™
FASCIA SYSTEM**

**PRO PLUG® SYSTEM
DECKFAST®**

**CAP-TOR® xd
HEADCOTE®**

**STRUCTURAL
SMART-BIT®**



About Us

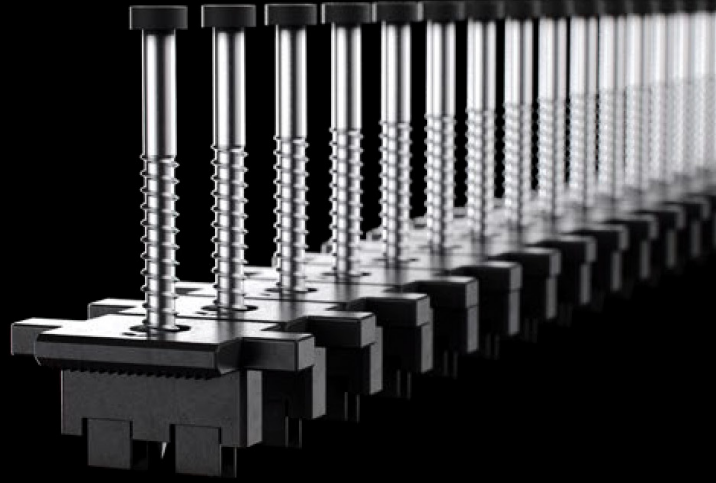
Our goal at Starborn is to provide professional contractors, as well as, leading building materials distributors and dealers nationwide with quality construction fasteners and innovative fastening solutions that bring value to their business.

Founded in 1961, Starborn Industries originally provided wood products to the building industry, but by the early 1980's construction fasteners became our primary product line. Since the late 1990's, Starborn has focused its fastener line on deck fastening solutions. We carefully monitor the decking industry and work closely with decking manufacturers to ensure the best fastening solutions for all types of deck installations as shown by our current offering of proprietary and patented products. These include DECKFAST®, PRO PLUG® SYSTEM, CLIP & RIP, SMART-BIT®, and others as shown in this catalog.

New product development is continuous and ongoing. Our constant goal of inventing and providing innovative fastening solutions has made Starborn a leading provider of fasteners in the decking industry worldwide. We are the deck fastening specialists.

Clip&Rip™

Universal Hidden Deck Clip




APPLICATION

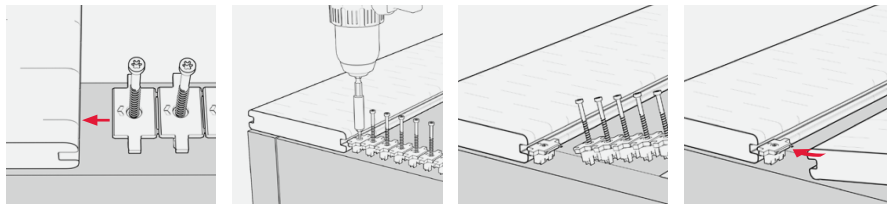
Clip&Rip™ universal hidden deck fasteners secure inner decking boards quickly and effectively while maintaining a clean, fastener-free finish. Clip&Rip™ comes pre-loaded with stainless steel screws and assembled in ready-to-install strips saving time and money.

FEATURES

- For use with grooved composite, PVC and wood decking in any deck pattern.
- Pre-assembled in collated “sticks” of 16 for increased installation speed and ease of use.
- Clip creates 3/16” spacing between boards
- 305 and 316 stainless steel screw options available
- T15 driver bit included

INSTRUCTIONS

- Insert the strip of clips with the  arrow pointing forward into the leading board groove. Center over joist.
- Drive the screw down in a straight and steady fashion until the head of the screw is flush with the clip.
- Lift up on strip to break off installed clip.
- Install clips at every joist along length of board.
- Place next board into position. Holding the deck board at a slight angle, push deck board into previously installed clips. Check gapping between boards to ensure consistency.



ESTIMATED COVERAGE

JOIST SPACING	100 SQ. FT. (AREA)	200 SQ. FT. (AREA)	300 SQ. FT. (AREA)	400 SQ. FT. (AREA)	500 SQ. FT. (AREA)
12"	210	441	672	882	1113
16"	175	336	512	672	848

BOARD COMPATIBILITY

Clip&Rip™ works with most brands of grooved PVC and Composite deck boards, including Trex®, Timbertech®, Fiberon®, MoistureShield® and more. It also works with most styles of 5/4 hardwood and thermally modified deck boards.

FINISH

Starter Clips

- 305 Stainless Starter Clip

Field Clips

- Glass Filled Nylon Field Clips

CORROSION

Exterior use—Approved for use in ACQ and pressure treated lumber.

For salt water or other areas where corrosion is a concern, use Grade 316 Stainless.

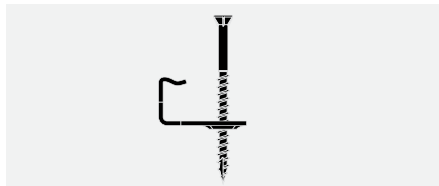
DRIVE SYSTEM

T15 Star Drive

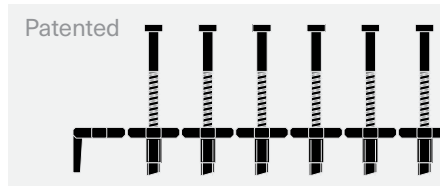
COMPATIBLE PVC/COMPOSITE BOARDS

TREX® SELECT TRANSCEND TRANSCEND LINEAGE SIGNATURE ENHANCE	TIMBERTECH® LEGACY RESERVE PRIME PRIME+ TERRAIN (AZEK) HARVEST (AZEK) LANDMARK (AZEK) VINTAGE	FIBERON® PARAMOUNT PROMENADE GOODLIFE CONCORDIA SANCTUARY	DECKORATORS® PICTURE FRAME VENTURE VAULT VISTA VOYAGE TRAILHEAD TROPICS (LOWES) DISTRESSED (LOWES)	MOISTURESHIELD® VISION MERIDIAN ELEVATE VANTAGE
ARMADILLO® COMMERCIAL LIFESTYLE ESSENTIAL HERITAGE	WOLF PERSPECTIVE	EVALAST® APEX INFINITY	ENVISION® DISTINCTION EXPRESSION EVERGRAIN RIDGE PREMIUM	NEWTECH WOOD® MAGELLAN VOYAGER
SYLVANIX® ELEMENTS DESTINATIONS ELITE ESSENTIALS ELITE COLLECTION SKYLINE	TRUNORTH CLUBHOUSE® ULTRA LEGACY	VERANDA® ELITE HIGH-PERFORMANCE	VEKADECK® GROOVE	

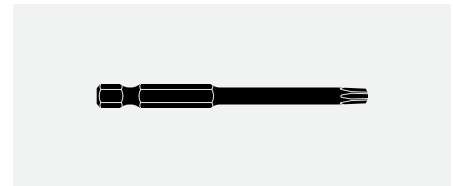
SYSTEM COMPONENTS



Starter Clip



Clip&Rip Strip



T15 BIT

CLIP&RIP™ STRIP PACKAGING



LENGTH	ITEM NO	FINISH	DRIVE TYPE	CLIPS PER STRIP	PACK QTY
1-3/4"	KAS38T175	305 Stainless with Nylon Clip	T15	16	192 (12 strips)
	KAS38B175	305 Stainless with Nylon Clip			800 (50 strips)

CLIP&RIP™ STARTER CLIP PACKAGING

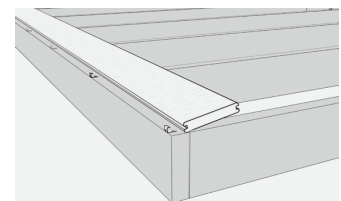
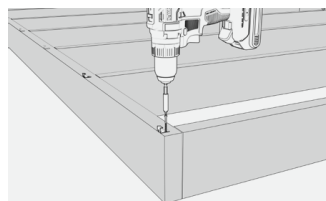
LENGTH	ITEM NO	FINISH	DRIVE TYPE	PACK QTY
1-5/8"	KBS01A162	305 Stainless with Stainless Clip	T15	12 strips



STARTER CLIP INSTRUCTIONS

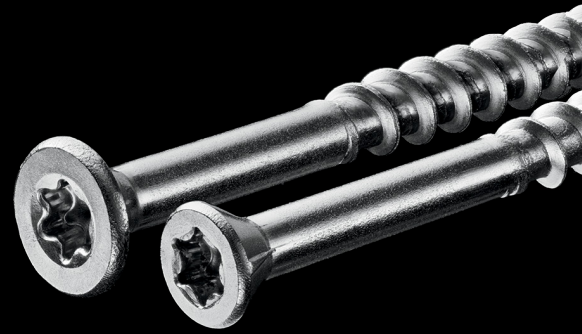
- For first and last boards, screw a starter clip at every joist.
- Once all starter clips are installed, push the first deck board into the starter clips.
- Proceed to fasten remainder of boards with standard clips.

*Starter clips are only available in 305 stainless steel



DECKFAST®

Stainless Exterior Wood Screw



APPLICATION

Stainless steel screws for hardwood, cedar, redwood and pressure treated decking.

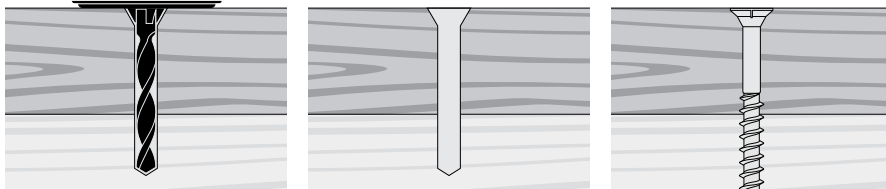
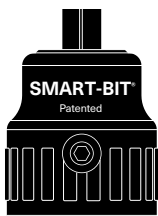
- Flat Head—For hardwood, cedar, redwood and pressure treated decking.
- Trim Head—For hardwood, cedar and redwood; pressure treated trim and finish applications.

FEATURES

- Grade 305 and Grade 316 stainless steel for superior corrosion resistance
- Lengths from 1-1/4" to 3-1/2"
- Reinforced flat or trim head with nibs for better countersinking
- Extra deep star drive recesses to prevent cam-out
- Type 17 auger tips for faster, easier insertion and to help prevent splitting

INSTALLATION

- Predrilling required for hardwoods and in all cases when fastening within 1-1/2" from the end of a deck board.
- Slightly countersink screw head. Do not overdrive.
- Recommended: For a clean and professional finish use SMART-BIT® Predrilling and Countersinking Tools in combination with screws.



FINISH

Grade 305 Stainless
Grade 316 Stainless Special order

CORROSION

Exterior use—Approved for use in ACQ and pressure treated lumber.

For salt water or other areas where corrosion is a concern, use Grade 316 Stainless.

DRIVE SYSTEM

Star drive

TOOL COMPATIBILITY

SMART-BIT® Predrilling and Countersinking Tool
SMART-BIT® Depth Setter Tool



FLAT HEAD PACKAGING



LENGTH	DRIVE TYPE	POUND PACKAGING		
		1 LB	5 LBS	9 LBS
6 x 1-1/4"	T20	•	•	•
		•	•	•
10 x 2-1/2"		•	•	•
	T25	•	•	•
10 x 3-1/2"		•	•	•
		•	•	•

PRO PLUG SYSTEM®

Wood

Hidden Fastener for Wood Decking and Flooring



APPLICATION

Hidden fastening system that provides a secure face-fastened connection with precision cut, face grain plugs made from a variety of hardwood decking and flooring. Installation is a four step process utilizing a predrilling tool, glue (sold separately), screw and plug.

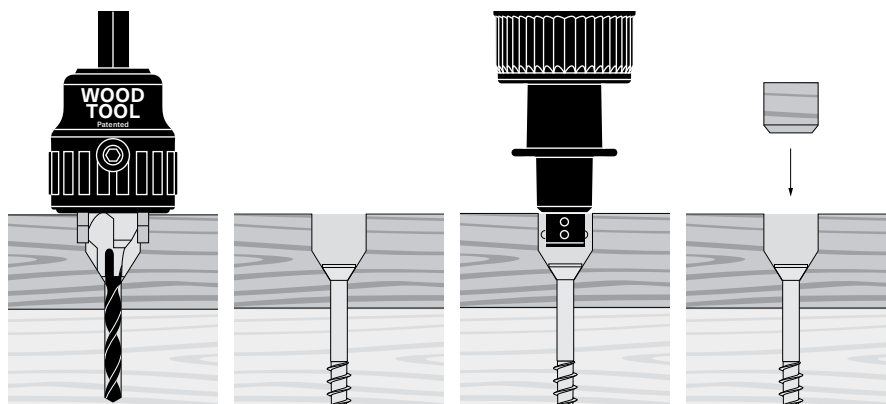
FEATURES

- Provides the strength of top-down fastening with the high end finish of face grain wood plugs
- Drill, screw, glue and plug all types of hardwoods in a fraction of the time compared to traditional plug methods
- Patented Wood Tool creates a screw hole, countersink and counterbore to match other system components
- Free spinning stop collar on Wood Tool prevents damage to the board surface
- Patented glue nozzle applies glue to the sidewall of the counterbored hole
- Kit packaging includes screws, plugs and glue nozzle (Wood Tool sold separately)

INSTALLATION

Follow all decking and flooring manufacturer instructions, including specifications for screw spacing, edge/end distances, and gapping.

- Predrill with the countersinking Wood Tool using a corded drill on high speed until the collar stops spinning. Remove debris from hole.
- Drive screw so that it is fully seated in the countersink. (Do not overtighten.)
- Fit glue nozzle on glue bottle. Apply glue to hole by pushing down and gently squeezing the bottle while rotating it one quarter turn, then remove. Glue should coat the side walls of the hole.
- Insert plug into hole, align grain of plug to match grain of board, and tap with a smooth-faced hammer until the plug is flush with board.



FINISH

DECKING KITS

Grade 305 Stainless
Grade 316 Stainless Special order

CORROSION

DECKING & FLOORING KITS

Exterior use—Approved for use in ACQ and pressure treated lumber.

For salt water or other areas where corrosion is a concern, use Grade 316 Stainless.

DRIVE SYSTEM

Star drive

TOOL COMPATIBILITY

Wood Tool
Wood Tool Replacement Bits

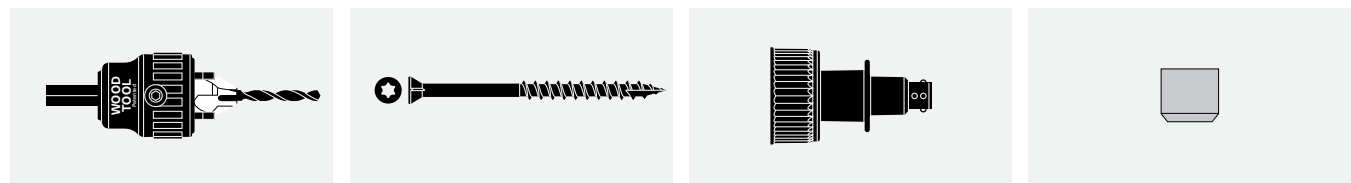
PLUGS AVAILABLE IN THE FOLLOWING HARDWOOD DECKING



PLUGS AVAILABLE IN THE FOLLOWING HARDWOOD FLOORING

New board brands are always being added to our product offering. Please refer to our website or contact Starborn® customer service if you do not see the board brand you are looking to use on your project.

SYSTEM COMPONENTS



Countersinking Wood Tool

For predrilling and countersink
(Sold separately)

Screws

Grade 305 or Grade 316 stainless for decking, Grade 305 stainless for flooring

Glue Nozzle

Applies glue to sidewalls of screw hole

Plugs

Made from actual hardwood species

PRO PLUG® SYSTEM WOOD PACKAGING

DECK KIT PACKAGING					
LENGTH	FINISH	COVERAGE	SCREWS	PLUGS	TOOL
2-1/2"	305 Stainless	25 sq ft	100	100	—
		100 sq ft	350	350	—
		300 sq ft	1050	1050	—
2-1/2"	316 Stainless	300 sq ft	1050	1050	Ipe Only

SMART-BIT®

Predrilling and Countersinking Tool

For use with HEADCOTE®
and DECKFAST® Stainless Screws

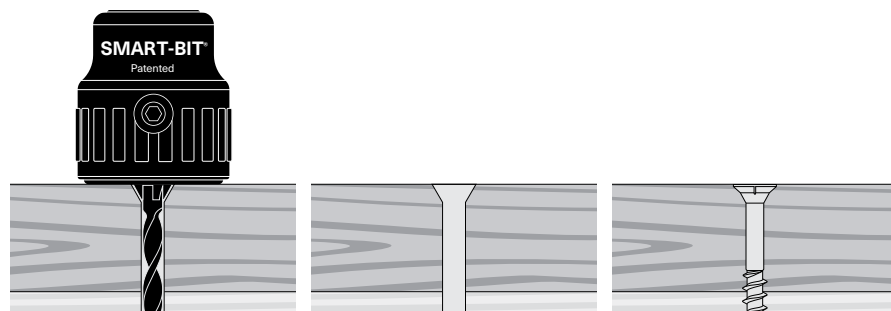
Patented

APPLICATION

Designed for decking and general woodworking when materials require predrilling. Tools are engineered to match precisely with HEADCOTE® and DECKFAST® stainless steel screws to provide a clean and professional finish.

FEATURES

- Perfect for use with hardwoods like ipe, mahogany, meranti and merbau
- Pre-set countersink matches head shape of HEADCOTE® and DECKFAST® stainless steel screws
- Free spinning stop collar protects board surface
- Durable ball bearing assembly
- Replaceable Powerbolic® fluted drill bits that cut through decking more than twice as fast as standard wood bits

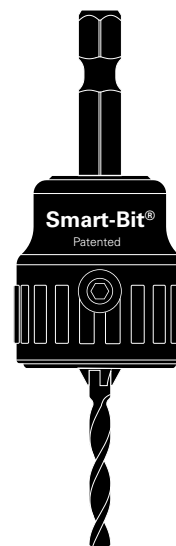


CORRECT USE

- Choose the tool size gauge that matches the diameter and head style of screw.
- (The 1-1/8" overall hole depth is sufficient for installing decking material up to 5/4 nominal (30mm thick))
- Drill in a straight and stable fashion.
- The hole is complete when the collar stops spinning.

REPLACING BITS

- Disconnect power and remove the SMART-BIT® Tool from the drill.
- Loosen the set screw with the included hex wrench.
- Remove old bit and insert a new bit fully into the countersink portion with the flat side facing the set screw.
- Tighten the set screw.
- Use only SMART-BIT® Powerbolic® replacement bits.



DIMENSIONS

TOOL SIZE GAUGE (MM)	HEAD STYLE	DRILL BIT MM (INCH)	COUNTERSINK DIA. MM (INCH)	COUNTERSINK ANGLE	HOLE DEPTH* MM (INCH)
#7 (4.2)	Trim	3.0 (7/64")	6.2 (1/4")	60°	30 (11/8")
#8 (4.5)	Trim	3.2 (1/8")	6.6 (17/64")	60°	30 (11/8")
#8 (4.5)	Flat	3.2 (1/8")	8.4 (21/64)	82°	30 (1-1/8")
#10 (5.0)	Flat	3.6 (9/64")	9.2 (23/64")	90°	30 (11/8")

*Overall hole depth including countersink portion. When installing decking it is general practice to not pre-drill the underlying (joist) material; this is usually treated lumber and does not require pre-drilling. The 11/8" overall hole depth is sufficient for installing decking material up to 5/4 thick (nominal).

SMART-BIT®

Depth Setter Tool

Driving Tool for Setting Screws to the Perfect Depth

Patented

APPLICATION

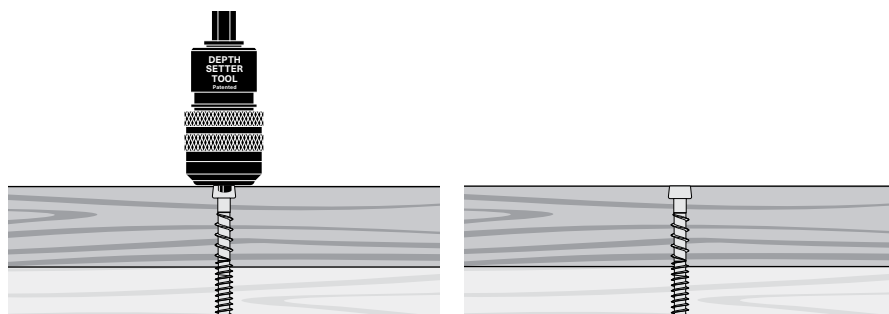
Designed to drive screws to the perfect depth—flush or below the work surface—every time. Adjustable and easy to use on decks, drywall and in general construction. The tool works with Phillips® and Torx® bits and is designed for use with Starborn® fasteners and other screw products.

FEATURES

- Perfectly set screws every time
- Locking rings allow for screw depth adjustment and secures desired setting for consistent screw installation
- Auto-Stop™ mechanism sets screw to the correct depth without stripping screw recess
- Free spinning stop collar prevents damage to the board surface

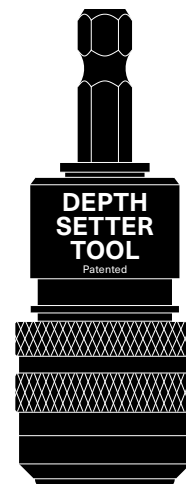
CORRECT USE

- Use a standard drill. Do not use an impact driver.
- Drill in a straight and stable fashion.
- The screw is set when the Auto-Stop™ mechanism engages fully (making a “pop” sound in most materials).



REPLACING BITS

- Disconnect power and remove the SMART-BIT® Tool from the drill.
- Loosen the set screw with the included hex wrench.
- Remove old bit and insert a new bit fully into the countersink portion with the flat side facing the set screw.
- Tighten the set screw.
- Use only SMART-BIT® Powerbolic® replacement bits.

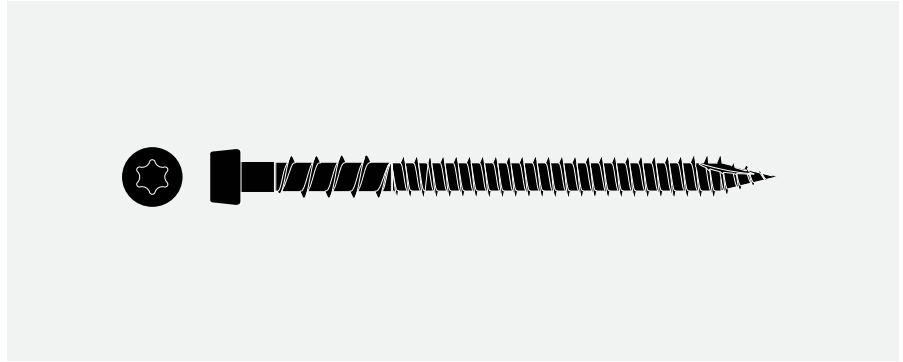


SMART-BIT® Depth Setter Tool

COMPATIBLE STARBORN® SCREWS

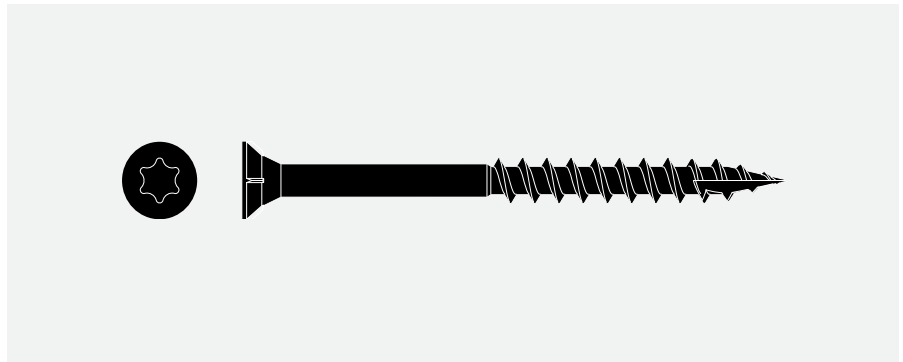
CAP-TOR® xd Stainless

Color Matched Screws for PVC and Composite Decking



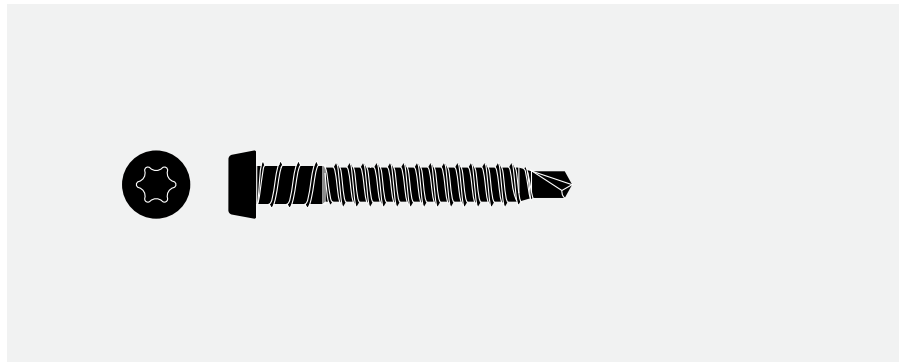
DECKFAST® Stainless Steel

Lumber and PVC Trim



CAP-TOR® Metal

Color Matched Screws for Fastening PVC, Composite and Hardwood Decking to Trex Elevations and other Metal Framing Systems



HARDWOODS®

Materials That Inspire

Shop for thousands of quality products from world renowned brands on Hardwoods.Online



Proudly Distributed by

HARDWOODS®
Materials That Inspire

888-826-5528

hardwoods-inc.com | us.hardwoods.online

Specification Support by

Design ^{one} Source®
Where Inspiration and Design Meet Supply

866-599-1433

designonesource.com